

# IT'S TIME FOR A REVOLUTION



# ZEVOMAX II

SUPERIOR CLIMATE CONTROL  
FOR PROFESSIONAL INDOOR GROW ENVIRONMENTS



THE MOST STABLE  
CLIMATE THINKABLE.  
**GUARANTEED.**

# STEADY STATE SIMULTANEOUSLY COOL OR HEAT, DEHUMIDIFY, FILTER AND CIRCULATE AIR. THAT'S COOL!



**TEMPERATURE & HUMIDITY IN ONE**  
One System, One Control



**UNMATCHED CLIMATE STABILITY**  
No temperature or humidity swings



**SCALABLE & ADAPTABLE**  
Fits any grow environment, small to large scale

The Revomax II is the all-in-one solution for a perfectly regulated indoor climate. With simultaneous, precise control over temperature and humidity, it eliminates fluctuations and ensures a perfectly balanced environment. Its scalable and flexible design fits any grow setup, from small to large. As a true revolution in climate control, the Revomax sets a new standard for efficiency, reliability, and optimal growth.

## REVOMAX II BY OPTICLIMATE

The Revomax II is a climate control system featuring our new Infinity DC inverter technology, offering the broadest capacity range of all existing air conditioning units. Unlike other products that cannot go below 60%, it can modulate cooling capacity down to 20-30%, preventing unnecessary on-off cycles. This ensures a super stable climate by minimizing temperature and humidity fluctuations, optimizing energy efficiency, and maintaining ideal growing conditions even when cooling demand is low.

### REVOMAX COOLING LOAD



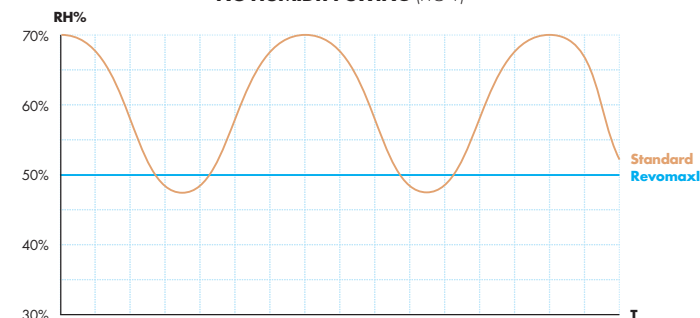
### STANDARD AIRCO COOLING LOAD



### LINEAR DEHUMIDIFICATION TECHNOLOGY

With a normal air conditioner the humidity cannot be controlled, with the Pro4 the humidity swing will be 20% and with the RevomaxII only 4%RH. Constant humidity means no humidity swings. (fig 1)\*

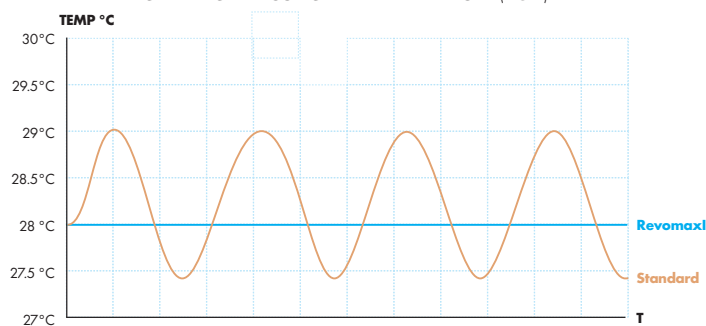
### NO HUMIDITY SWING (FIG 1)



### INTELLIGENT STEADY-STATE TEMPERATURE AND HUMIDITY LOGIC

Constant temperature, no temperature fluctuations so the temperature will be  $\pm 0,2^{\circ}\text{C}$  from the setpoint (Fig 2).

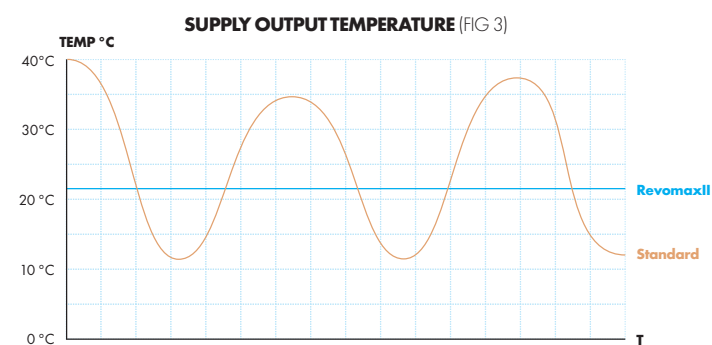
### STEADY STATE CONSTANT TEMPERATURE (FIG 2)



Stable output (supply) temperature, during dehumidification at night or day with the Pro4 the output temperature can go up as high as  $40^{\circ}\text{C}$  and as low as  $10^{\circ}\text{C}$  depending on the indoor temperature during dehumidification.

\* Assuming sufficient humidity is present for dehumidification.

With the RevomaxII the output temperature will be  $\pm 0,2^{\circ}\text{C}$  within the temperature setpoint. For many applications and plant species this is very important, for example green vegetables like lettuce and herbs high output temperature fluctuation result in stressed plants. The more stable the output temperature (fig 3) the lesser the stress for the plants. Because of this new feature the unit can now be used for a much larger variety of applications and plants.



The features above are made possible because of our **patented double EEV technology**, we are the only supplier with this technology. This will bring the Revomax to a new level of controllability and flexibility.

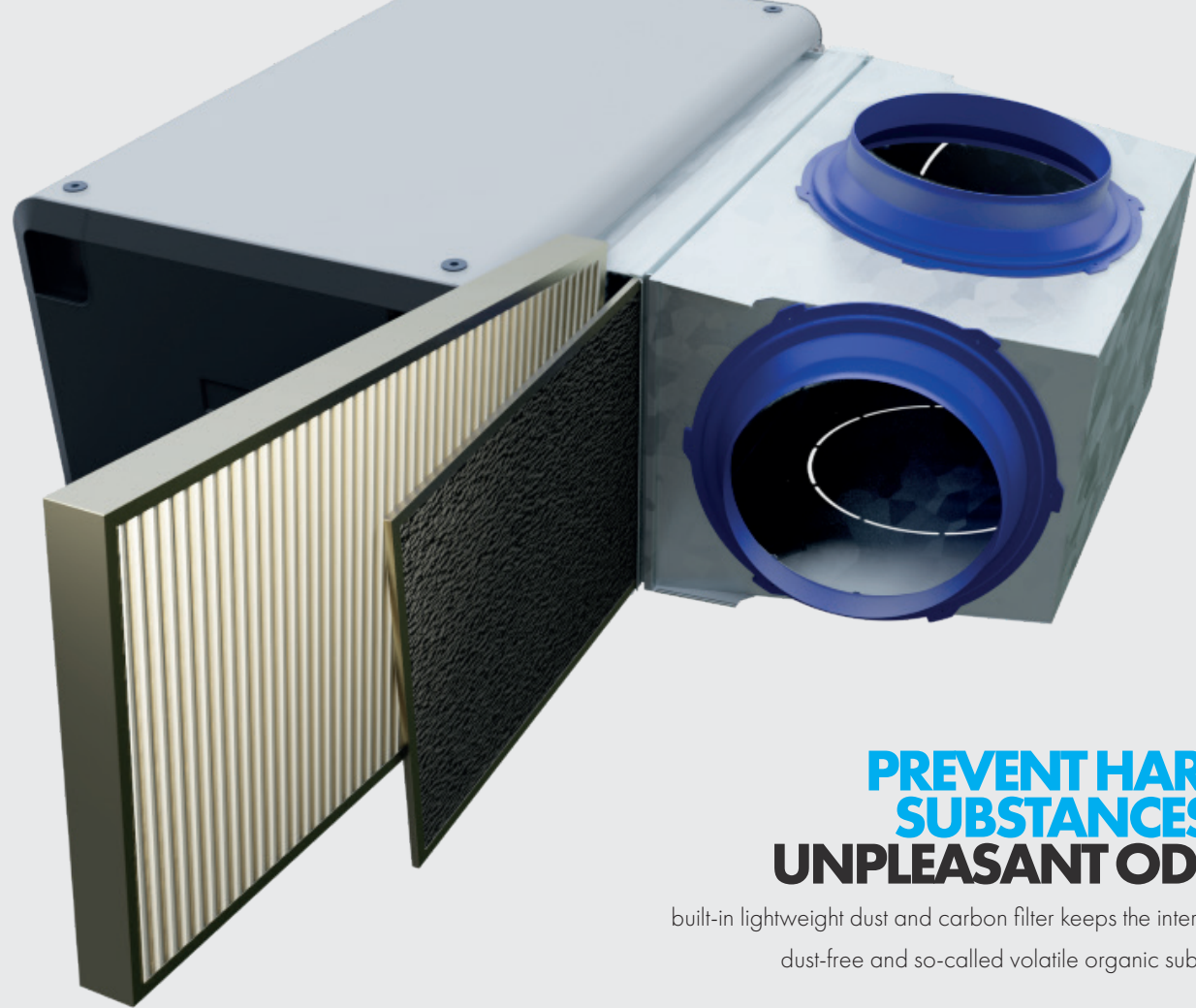
The RevomaxII units is optimised for growing with LED. When growing with LED the room temperature rises slowly when the LEDs are turned on and because of this optimum photosynthesis is slowed down. With the Revomax the room will be heated up with the DC compressor in heating mode without using external electrical heaters. Like this the optimum temperature will be reached in the fastest possible way and optimum photosynthesis will be reached as fast as well. During heating the dehumidification process keeps being active to assure the humidity stays in control.

Besides this the revomax units will be outfitted with a 7" smart remote controller which can be connected by WIFI and or LAN. With this you can control the Revomax remotely and also get alarms and alerts by email.



**THE MOST STABLE  
CLIMATE THINKABLE.  
GUARANTEED.**





## PREVENT HARMFUL SUBSTANCES AND UNPLEASANT ODOURS

built-in lightweight dust and carbon filter keeps the interior components dust-free and so-called volatile organic substances (VOSs)



## WATER-COOLED 2 OPTIONS

The Revomax II is a fully water-cooled climate control system, ensuring efficient, stable, and energy-saving operation without the limitations of air-cooled alternatives. It offers two configurations: a closed-loop system, which recirculates water for maximum efficiency and minimal waste, and an open-loop system, which uses a continuous water source for cooling. For an optimized setup, the Revomax can be seamlessly combined with a perfectly matched OptiClimate water cooler, ensuring maximum performance and reliability.

# REVOMAX II

## BY OPTICLIMATE

The RevomaxII is a climate control system developed entirely on the company's own premises. This resulted in a completely optimised and efficient product which enables the climate to be adjusted to perfection while consuming as little energy as possible.

The RevomaxII is the only real all in solution for managing your interior climate and has the unique property of being able to cool or heat, dehumidify, filter and circulate air at the same time. You are no longer dependent on the outside temperature and can experience the perfect climate, all year round. You can even achieve the ideal temperature during a heat wave. The RevomaxII creates an optimal distribution of air in the room creating an even temperature. The temperatures can be exactly adjusted to your wishes and will be continuously maintained.

### IMPROVE AIR QUALITY

Humidity is everywhere in the air and can have a negative effect on your way of life and productivity. Humidity can be very damaging and can cause mould, rot, rust and a musty odour. Too much humidity can lead to dust mites and allergies. It is therefore essential for an optimal indoor climate to manage humidity. The RevomaxII helps you to create the ideal humidity under the most extreme circumstances.

The dehumidification functions of all other (water-cooled) air conditioning systems on the market work based on cooling. During cooling, the air is dehumidified, which is a natural phenomenon. If there is little warmth in the air, the required temperature is quickly reached and the air conditioning discontinues cooling and dehumidifying. This keeps atmospheric humidity high. Compared to its competitors, the RevomaxII has the unique property of being able to dehumidify even after the desired temperature has been reached.

### PREVENT HARMFUL SUBSTANCES AND UNPLEASANT ODOURS

The built-in lightweight dust and carbon filter keeps the interior components dust-free and so-called volatile organic substances (VOSs) and disturbing smells such as solvents, softeners, cooking and food odours, smoke and body odours are absorbed. The dehumidification function also deals preventively with musty odours from mould formation due to condensation.

### MOST SAFE SYSTEM

The RevomaxII system has all kinds of built-in functions that ensure that the RevomaxII ensures its superior climate control.



The built-in temperature protection disconnects heat sources when the set maximum temperature is exceeded. E.g. when the water supply is obstructed. A fire could occur without this device.



If the water sensor comes into contact with the water, the built-in water leak safeguard ensures the water supply is cut off. This may occur, in the event of a burst pipe, broken link or connection, or a blocked sewer.



The RevomaxII is fireproof; all of the electrical components including the heating and connections are contained in the steel housing.



The RevomaxII has an alarm outlet for sending an SMS alarm in the event of an error message (requires a separate SMS module).

The RevomaxII has a built in remote control feature made possible by WIFI or LAN.



**THE MOST STABLE  
CLIMATE THINKABLE.  
GUARANTEED.**





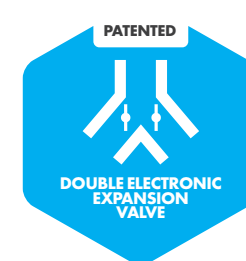
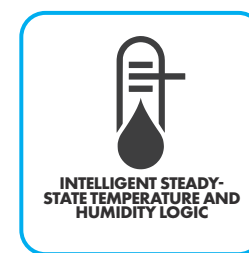
# REVOMAX II FREE AIR

BY OPTICLIMATE

Where the RevomaxII is made to distribute the air through a ducting system or air distribution hoses, the RevomaxII Free Air is made to blow it out freely. The RevomaxII Free Air is designed in such a way that it takes up as little volume as possible and thus takes up as little space as possible and at the same time intercepts as little light as possible.

The specialized fans have a reach of up to 30m, allowing the Free Air models to be mounted on the grow room wall. This enables climate control without the need for air distribution hoses above the crop.

All the features that the RevomaxII has are also available for the Free Air version.



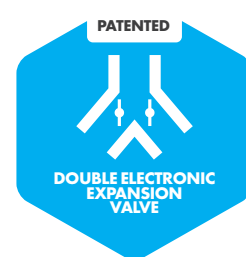
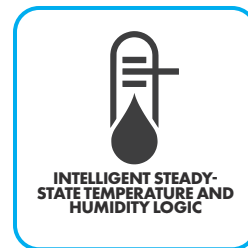


# REVOMAX II

BY REVOMAX II



## WHY CHOOSE REVOMAX II BY OPTICLIMATE?



- Digital inverter technology, widest capacity range 30-100%
- Intelligent steady state temperature and humidity logic
- Optimised for LED horticulture growing The perfect climate control all year round
- Cooling, heating, dehumidifying, circulating and filtering in one device
- Photocell; the photocell automatically activates the cooling mode in the morning and the heating/dehumidifying mode at night
- Simply enter the day and night temperature and Revomax II will do the rest; it doesn't get easier
- The quietest system available
- Relatively low energy consumption
- Dehumidifying possible day and night
- Adjustable cooling input
- Built-in dust and carbon filter
- Ceramic heating + heat pump mode heating
- Built-in temperature and water leakage safety switch optional
- Clear and detailed remote control
- Could be remote controlled by WIFI or LAN
- Fire-safe!
- Pre-heat function
- Slow cool-down function
- Alarm log function
- Invisibly concealed
- Deep cooling possible, temperatures below 10°C

# REVOMAX II

## SPECIFICATIONS

| Art.   | Type                       | Voltage     | Phase* | Absorbed power | Capacity | Dehumidifying Power L/24h up to | Water consumption L/min | Heating | Dimensions (cm) | Weight |
|--------|----------------------------|-------------|--------|----------------|----------|---------------------------------|-------------------------|---------|-----------------|--------|
| 1-7402 | <b>6000 REV2</b>           | 230V - 400V | 1 or 3 | 1450W          | 6 kW     | 170                             | 2 - 4                   | 3x1000W | 86x48x43        | 89 kg  |
| 1-7403 | <b>10000 REV2</b>          | 230V - 400V | 3      | 2150W          | 10 kW    | 290                             | 3 - 6                   | 3x1300W | 96x56x50        | 99 kg  |
| 1-7404 | <b>15000 REV2</b>          | 230V - 400V | 1      | 3100W          | 15 kW    | 441                             | 5 - 9                   | 3x2000W | 107x66x51       | 122 kg |
| 1-7405 | <b>15000 REV2</b>          | 400V        | 3      | 3100W          | 15 kW    | 441                             | 5 - 9                   | 3x2000W | 107x66x51       | 122 kg |
| 1-7408 | <b>21000 REV2</b>          | 400V        | 3      | 4340W          | 21 kW    | 610                             | 7 - 13                  | 3x2700W | 117x71x56       | 146 kg |
| 1-7409 | <b>30000 REV2</b>          | 400V        | 3      | 6300W          | 30 kW    | 880                             | 10 - 20                 | 3x2700W | 123x90.5x54.5   | 200 kg |
| 1-7410 | <b>30000 REV2 FREE AIR</b> | 400V        | 3      | 6200W          | 30 kW    | 880                             | 10 - 20                 | 3x3000W | 122.5x83x54.5   | 206 kg |
| 1-7412 | <b>45000 REV2 FREE AIR</b> | 400V        | 3      | 9300W          | 45 kW    | 1320                            | 15 - 30                 | 3x3000W | 123x90.5x54.5   | 290 kg |

## OPTICLIMATE

### SPECIFICATIONS

| Art.   | Type                       | Voltage     | Phase*   | Absorbed power | Capacity          | Dehumidifying Power L/24h up to | Water consumption L/min | Heating | Dimensions (cm) | Weight   |
|--------|----------------------------|-------------|----------|----------------|-------------------|---------------------------------|-------------------------|---------|-----------------|----------|
| 1-1000 | <b>2000 PRO3</b>           | 230V        | 1 or 2   | 500W           | 2 kW              | 35                              | 0,6 - 1,2               | 2x1300W | 100x50x42       | 53 kg    |
| 1-1001 | <b>3500 PRO3</b>           | 230V        | 1 or 2   | 740W           | 3,5 kW            | 55                              | 1 - 2                   | 2x1500W | 100x50x42       | 57 kg    |
| 1-1002 | <b>6000 PRO3</b>           | 230V - 400V | 1 or 3 1 | 1450W          | 6 kW              | 100                             | 2 - 4                   | 3x1500W | 115x53x43       | 80 kg    |
| 1-1003 | <b>10000 PRO3</b>          | 230V - 400V | 1 or 3   | 2150W          | 10 kW             | 170                             | 3 - 6                   | 3x2000W | 115x56x50       | 120 kg   |
| 1-1004 | <b>15000 PRO3</b>          | 400V        | 3        | 3100W          | 15 kW             | 270                             | 5 - 9                   | 3x2700W | 122.5x83x54.5   | 158.5 kg |
| 1-1006 | <b>15000 PRO3 Inverter</b> | 400V        | 3        | 3100W          | 15 kW (+8% boost) | 270                             | 5 - 10                  | 3x2700W | 122.5x83x54.5   | 158.5 kg |
| 1-4006 | <b>15000 Pro4 Inverter</b> | 400V        | 3        | 3100W          | 15 kW (+8% boost) | 441                             | 5 - 10                  | 3x2000W | 123x90.5x54.5   | 180 kg   |

| Art.   | Type                          | Model                    | Power  | Weight | Dimensions(cm) | Noise    | Power   | #Fans | Water content |
|--------|-------------------------------|--------------------------|--------|--------|----------------|----------|---------|-------|---------------|
| 1-8011 | <b>OC Water Cooler 4,5 kW</b> | 1x OC 2000 / 1x OC 3500  | 4,5 kW | 7 kg   | 650x410x320    | 28 dB(A) | 0,06 kW | 1     | 2 ltr         |
| 1-8021 | <b>OC Water Cooler 9 kW</b>   | 1x OC 6000               | 9 kW   | 13 kg  | 1200x410x320   | 31 dB(A) | 0,12 kW | 2     | 4 ltr         |
| 1-8041 | <b>OC Water Cooler 14 kW</b>  | 1x OC 10000 / 2x OC 6000 | 14 kW  | 19 kg  | 1750x410x320   | 33 dB(A) | 0,18 kW | 3     | 6 ltr         |
| 1-8061 | <b>OC Water Cooler 18 kW</b>  | 1x OC 15000              | 18 kW  | 26 kg  | 1200x810x320   | 34 dB(A) | 0,24 kW | 4     | 8 ltr         |
| 1-8073 | <b>OC Water Cooler 32 kW</b>  | 2x OC 15000              | 32 kW  | 52 kg  | 1750x810x320   | 36 dB(A) | 0,36 kW | 6     | 21 ltr        |

| Art.   | Type                  | Model                    | Power | Weight | Dimensions(cm) | Noise    | Power   | #Fans | Water content |
|--------|-----------------------|--------------------------|-------|--------|----------------|----------|---------|-------|---------------|
| 1-8031 | OC Water Cooler 12 kW | 1x OC 10000 / 2x OC 6000 | 12 kW | 63 kg  | 1025x933x600   | 32 dB(A) | 0,27 kW | 1     | 6 ltr         |
| 1-8051 | OC Water Cooler 17 kW | 1x OC 15000              | 17 kW | 76 kg  | 1025x933x600   | 32 dB(A) | 0,27 kW | 1     | 11 ltr        |
| 1-8075 | OC Water Cooler 32 kW | vertical 2x OC 15000     | 32 kW | 125 kg | 1600x983x600   | 40 dB(A) | 0,60 kW | 1     | 21 ltr        |
| 1-8074 | OC Water Cooler 32 kW | horizontal 2x OC 15000   | 32 kW | 125 kg | 1600x1050x943  | 40 dB(A) | 0,60 kW | 1     | 21 ltr        |





**STEADY STATE SIMULTANEOUSLY  
COOL OR HEAT, DEHUMIDIFY,  
FILTER AND CIRCULATE AIR.  
THAT'S COOL!**

The Revomax is a climate control system featuring our new Infinity DC inverter technology, offering the broadest capacity range of all existing air conditioning units. Unlike other products that cannot go below 60%, it can modulate cooling capacity down to 20-30%, preventing unnecessary on-off cycles. This ensures a super stable climate by minimizing temperature and humidity fluctuations, optimizing energy efficiency, and maintaining ideal growing conditions even when cooling demand is low.

**THE MOST STABLE.  
CLIMATE THINKABLE.  
GUARANTEED.**



# REVOMAX II

SUPERIOR CLIMATE CONTROL  
FOR PROFESSIONAL INDOOR GROW ENVIRONMENTS



Engineered & Designed in Holland

[RevomaxII.com](http://RevomaxII.com)